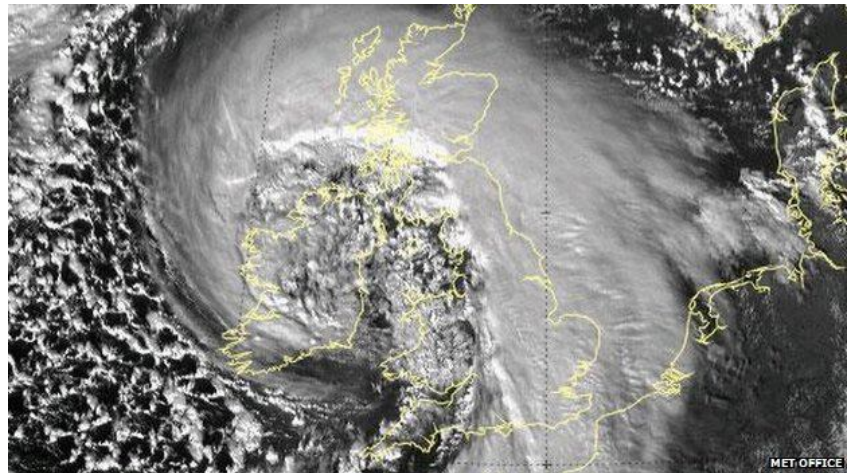


MARCH 2014 - for R & QV See page 2 for RTQ Forecast data Table

Circulated as information 9 MAR reproducing R periods and values already released (and QV implied, see p2) in Br+Ir 45d forecast of 16 FEB fc for MAR.

“Rapid intensification” of new Mini-Ice-Age / Wild Jet Stream extremes is here.



- CO2 warmist 'science' in total disarray
- Hurricane winds Britain+Ireland and top extremes in other parts of World confirm WeatherAction 'wild-winter' forecast Revision to SLAT9B

“Dramatic Hurricane Force 12 winds in Wales on 12 Feb superbly confirmed our WeatherAction (Feb 6) warning that our already forecast (4 wks ahead) top winds Force 10/11 Feb10-12 would notch up to Force 11/12 and the whole pressure pattern would shift ~250 miles SE. We warned that 6d ahead but it was only ~12 hours ahead that standard Met saw it coming. This intensification of extreme events means the world is now past the preliminary phase of this new Mini Ice Age”, says Piers Corbyn, Astrophysicist of WeatherAction.

Intensified MIA Extremes

“We have now advanced *SLAT9A to 9B (*Solar Lunar Action Technique) to get these new, 'rapid MIA intensification', extremes and are very pleased that we seized the right time to make the change which we knew had to come but were not sure when. The Slat 9A/B change to frontal impacts of the next R5 23-25th was also confirmed by greater penetration of weather fronts and substantially enhanced winds compared to Met Office Short Range forecasts.

“We are steering with our unique SLAT 'mathematical map' through a maze of amazing dramatic sun-earth-weather relations that have not been like this for over 200years, yet we are getting it right!”

THERE IS MUCH WORSE TO COME

“Specific extreme solar active events, brilliant auroras, 'Sudden' Stratospheric Warmings and increasingly wild jet stream behavior in the last two months including the relentless pounding of Britain and Ireland at the same time as USA was and is gripped in the offset polar vortex freeze-up all confirm our specific and general forecast of an advancing new Mini-Ice-Age. **Yet these are but a taste of wild extremes to come.**

“Now we have moved from 'Preliminary MIA (phase1) to Rapid Intensification (phase 2) very wild extremes – including heat but more often cold – will increase. Extremes very like recently – and worse - struck across the world in the last MIA – Dalton minimum. James A Marusek's excellent historical scary record shows what will hit in coming months and years:- <http://ktwop.files.wordpress.com/2010/12/weather-chronology-dalton.pdf>

“The CO2 warmists whose forecasts have failed and failed again are in total disarray in terms of their 'science' but rather than admit it they have chosen to lie and lie again; escalate troll attacks against WeatherAction and steal and re-package our mini-ice-age related information, prognoses, warnings and forecasts and present them as if they were due to their delusional CO2 anti-science even though **their own models predict opposite extremes and show CO2 cannot cause the wild Jet Stream. They're disgraceful charlatans** who must be relentlessly exposed and drummed out of their parasitic green posts and funds which are theft from the taxpayer.

See <http://www.weatheraction.com/docs/WANews14No06.pdf>

See “Miliband's claims on Climate Change are as deluded as The Charge of The Light Brigade”: <http://bit.ly/1cHmOsm>



RTQ MAR 2014 Forecast & News - p2 Forecast Periods to -1 day.

Red Warnings, Thunder/Tornado Risk & Major Earthquake/Volcanism Trial Risk

• With quake-volcano trial forecast clarifications. Note R or QV periods separated by 1d can 'merge'

Circulated 9 MAR as info Reproducing R periods and values already first issued in Br+lr 45d forecast of 16 Feb.

Red Weather periods, R, – are standardized **R1 to R5** (most extreme effect) in WeatherAction Solar Lunar Action Technique. They indicate Solar-Lunar drivers of thunderstorm and related extreme events around the world. Extreme weather event risk periods such as thunder/tornado (espec USA) development & potential Tropical Storm Formation and development periods (Cyclogenesis) are consequences of these drivers and are also periods in which standard meteorology models will notably underestimate strength of deluges, thunder, snow etc in forecasts from a day or so ahead. In these periods typically standard meteorology forecast (smf) estimates of rain/snow from a day or so ahead need to be doubled (or more for **R5**). **Dates UTC** for estimation although there are uncertainties. FORECAST MAPS & detailed forecasts with corresponding specific likely weather events are issued for various parts of the world. Lesser extremes ('Extra Activity') & 'Quiet periods' + likely weather scenarios are stated there.

Major Earthquake – Volcano Trial Risk Periods, QV, are in similar 1-5 categories as R periods, **but need not be the same as R**. **QV** Periods are largely similar to Red warning weather periods and are not specific to any particular Earthquake prone region or location. The largest Quake/volcano activity in term of intensity and prevalence (av per day) is expected in **QV5** and **QV4** periods and should include more **M6+** quakes. **QV3** may include **M6+** and **QV1-2** are less likely to have such but should have some extra activity. (Nb qv notation discontinued). Some preferred earth hemispheres for major quakes are also given. **M6.0 & above earthquakes are marked Red in US Geological Survey**
<http://earthquake.usgs.gov/earthquakes/eqinthenews/> M6.0 is a convention. Other levels (eg M5.7+, M6.5+, M7+) may help. Results best obtained via <http://earthquake.usgs.gov/earthquakes/eqarchives/epic/> **WeatherAction Research is ongoing**

RTQ Forecast Table MARCH 2014 R periods first published 16 FEB in B+I 45d. QVs all through MAR same as correspondence in FEB RTQ forecast in timing with Value as R except if amended and additions when new, typos excepted.

There are Interesting concentrations of Top Red, **R5** & Quakes Risk **QV5** and solar activity this MARCH

Date MAR 2014	Solar Lunar Factor Red Weather Warning	Extreme Weather Events Thunder / Tornado Cyclogenesis		Date MAR 2014	Major Earthquake + Volcano Trial Risk QV4, QV5 Tested by M6+. In R5 M6.5+ likelihood increases. QV trial forecasts under SLAT9BQV	
1-2 MAR	R4	High	High	1-2 MAR	QV4	Major Earthquakes - Volcano M 6.0+extra risk Major Earth-facing Coronal holes &/or Active regions near central longitude solar disc likely.
3-5 MAR	R3	Med	Med	3-5 MAR	QV3	Med-Major Earthquakes - Volcano M 5.7+extra risk Earth-facing Coronal holes &/or Active regions near central longitude solar disc likely.
6-7 MAR	R3	Med	Med	6-7 MAR	QV3	Med-Major Earthquakes - Volcano M 5.7+extra risk Earth-facing Coronal holes &/or Active regions near central longitude solar disc likely.
10-12 MAR	R5	Top High	Top High	10-12 MAR	QV5	V Major Earthquakes - Volcano M 6.5+extra risk Major Earth-facing Coronal holes &/or Active regions near central longitude solar disc likely.
14-15 MAR	R5	Med	Med	14-15 MAR	QV5	V Major Earthquakes - Volcano M 6.5+extra risk Major Earth-facing Coronal holes &/or Active regions near central longitude solar disc likely.
17-18 MAR	R3	Med	Med	17-18 MAR	QV3	Med-Major Earthquakes - Volcano M 5.7+extra risk Earth-facing Coronal holes &/or Active regions near central longitude solar disc likely.
21-22 MAR	R3	Med	Med	21-22 MAR	QV3	Med-Major Earthquakes - Volcano M 5.7+extra risk Major Earth-facing Coronal holes &/or Active regions near central longitude solar disc likely.
23-24 MAR	R5	Top High	Top High	23-24 MAR	QV5	V Major Earthquakes - Volcano M 6.5+extra risk Major Earth-facing Coronal holes &/or Active regions near central longitude solar disc likely.
28-29 MAR	R4	Top High	Top High	28-29 MAR	QV4	Major Earthquakes - Volcano M 6.0+extra risk Major Earth-facing Coronal holes &/or Active regions near central longitude solar disc likely.
30-31 MAR	R3	Med	Med	30-31 MAR	QV3	Med-Major Earthquakes - Volcano M 5.7+extra risk Earth-facing Coronal holes &/or Active regions near central longitude solar disc likely.
R5, (R5+R4) Fract MAR= [7, 11]/31 = 23%, 35%				QV5, (QV5+QV4) Fract MAR= [7, 11]/31 = 23%, 35%		

General Red Weather Warning (R) and Quake –Volcano (QV) Solar and Geomagnetic Associated effects.

All periods, especially **R4, R5**, are likely to be preceded by / include some or most of major or extra solar flare activity, Coronal holes, proton bursts, fast solar wind, increased ionospheric activity, geomagnetic storms, aurora, noctilucent clouds / sprites.

News and commentary of Weather & Earthquake Events is sent out via twitter @Piers_Corbyn - http://twitter.com/Piers_Corbyn and <http://www.facebook.com/profile.php?id=100001281948141&sk=wall>, www.WeatherAction.com and <http://climaterrealists.com/index.php>