



JUNE 2009 Britain & Ireland 30d ahead Forecast SWT25d
 Summary - Overalls - Detailed weather periods – Extra Timing detail - Maps - Graphs - 7 pages
 - Including Solar based likely corrections to apply to Standard Meteorology Forecasts as on TV.
 Weather Action forecasts are the only long range forecasts with independently tested & published proven skill.
 Longer Range & Forecasts for other Countries see www.weatheraction.com & www.lowefo.com
 For Short Range forecasts phone Weathernet personal premium rate service on 09061100445

Confidential

Detailed 30d ahead Britain & Ireland Forecast June 2009 SWT25d (Lbs1) from Euro maps issued as notes 22 Feb & update detail 25 May 2009
 This is a commercial product. Publication of any part in media or web must be through agreed WeatherAction summaries– see www.weatheraction.com

© Weather Action
 Tel +44(0)20 7939 9946

Weather Action Solar Weather Technique (SWT) forecasts provide: See p6 for fuller explanation

- Most likely weather scenarios in each period months ahead. Note: relative changes between periods are more reliably forecast than details in each period.
- The 'Solar Factor' most likely corrections which need to be applied a few days ahead to standard Meteorology forecasts (Smfs) – eg as issued on TV.
- Confidence. Long range forecasts are in about 10 periods per month with confidences A, B, C - least confident which should be applied with more caution. SWT advice about changes between periods and about how to improve standard computer forecasts - when they come to be made - are generally very skilled.

Latest World Warnings p4
 US+BI+Aus+Pacific+Bengal

UPDATE NOTE: This 30day ahead forecast prod under SWT25d in 9 weather periods is similar to the 130day ahead, SWT25d(0), fc but gives extra information and gives the JUNE forecast a stronger N/S split - making the South less wet.

JUNE 2009: Northern parts will be cooler & wetter than usual with showers sometimes thundery with hail and local flooding. Southern areas will have overall closer to normal temperatures and be less wet but with some heavy showers.

The full detailed forecast gives 9 time periods with maps & graphs of the most likely weather type development through the month. See p 2-6

The essential weather type development JUNE 2009

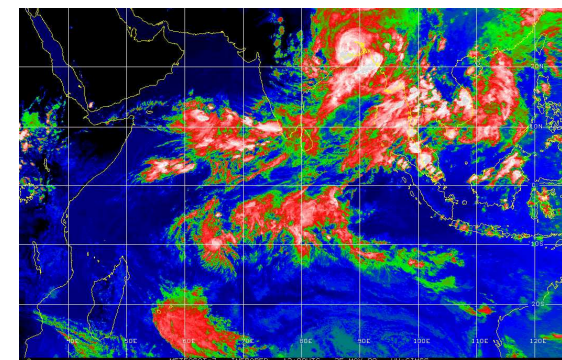
JUNE 2009: Much of the northern parts of the British Isles will feel the effect of multiple low pressure systems off the coast of Scotland. Although these will push south bringing heavy thundery showers, hail, locally strong winds and increased likelihood of whirlwinds, weather conditions in more southern parts will be often controlled by higher pressure.

General phases of development

- 1-12 June 09.** Mostly reasonably bright & dry in South & wetter in North with more general thundery rain & local flooding around 5th-7th.
- 13-21 June 09.** Cyclonic influence with a high risk of thundery showers, hail and flooding in most areas, generally cooler and cloudier.
- 22 –28 June 09.** Unsettled cyclonic weather with active cold front (25th-28th). **29 Jun – 1 Jul** Bec fine dry and sunny in all areas.

© Weather Action™ & Piers Corbyn™ © accept no liability for any loss howsoever arising from use of forecast information. Application of forecasts is entirely at the user's risk

Devastating Tropical Cyclone Aila confirms WeatherAction forecast



Bay of Bengal Tropical Cyclone Aila formed on 25 May and split into two main 'heads' as it pounded parts of India/Bangla Desh and Burma. This confirmed the video warning (5May) from Piers Corbyn for the formation of a Bay Of Bengal Cyclone in the period 24-26 May, which Piers had warned "would result in tragic deaths unless measures are taken".

The international Red Cross states hundreds were killed and over 5million were affected in West Bengal alone. see p6

• **SWT World forecasts 85% success; 94% in USA/Canada p4**

Most likely Detailed Weather - timing to 1 day. Likely success rate of weather periods this month is 7 or 8 basically successful out of the 9.

Solar factors Corrections to apply to standard short range Meteorology forecasts (Smfs) when they will come to be made on TV: **(Major) EA = Extra Activity** ie weather fronts (much) more active than Smfs as issued by Met Office/TV a few days ahead of events - making more rain, cloud, thunder, wind, whirlwind risk. **Sα, Sδ** etc types of **Sharp SWIP** (Solar Weather Impact Period) **Red Warnings** = potentially significantly more **extreme / dangerous** events. **Q**= Quieter. **NSF** = No Specific Solar Factors. **JSS** = Jet Stream South tendency. **JSN**= Jet Stream Normal.

2-4 JUNE 09	5-8 JUNE 09	9-11 JUNE 09	12-14 JUNE 09
Simil 22 Feb Extra detail.	Update Same 25 May 09	Update 25May= Drier + Warmer	Update very similar to 25May
Solar Factor Improvements to apply to TV forecasts: NSF/Q	Solar Factor Improvements to apply to TV forecasts: EA SWIP esp. 6/7	Solar Factor Improvements to apply to TV forecasts Q, Brighter than Smfs	Solar Factor Improvements to apply to TV forecasts: EA SWIP 12/13
<p>Localised heavy showers at first, becoming mostly dry. Cool</p> <p>A few showers, then becoming dry & bright</p>	<p>Less wet in N Scotland later</p> <p>Heavy thunderstorm + local flash floods with high local whirlwind risk</p> <p>Especially wet in S/E Eng</p>	<p>Showers decreasing, becoming generally dry with brighter or sunny intervals</p> <p>Warm & Bright SE</p>	<p>Thundery showers turning cool + less wet</p> <p>Mostly dry & bright with cool nights</p>
<p>2-4 JUNE 2009. B = 75% Showers, prob heavy in Nth & Ireland give way to drier & brighter conditions everywhere. Likely possible weather map scenario: Low pressure around N/NW Scotland fills.</p>	<p>5-8 JUNE 2009. A = 85% Very wet in most parts with thunderstorms & flash floods. Likely possible weather map scenario: Low over northern Britain & W-Central Europe. Some slow moving thundery fronts expected.</p>	<p>9-11 JUNE 2009 AB = 80% Becoming drier, brighter and warmer in most areas especially SE England. Likely possible weather map scenario: Shallow low affecting most parts of Britain & Ireland</p>	<p>12-14 JUNE 2009 A = 85% Unsettled, cooler thundery conditions for northern parts, dry, warm & sunny further south. Likely possible weather map scenario: Low pressure to N of Scotland affecting Nth Britain & Scandinavia. Azores high giving calmer conditions over France, Spain, S Eng & Ire</p>
<p>Winds (also see graph p5): Cyclonic – mostly W'ly & SW'ly in south.</p>	<p>Cyclonic prob mainly NE'ly in Sth & SW'ly in Nth. Mod to high whirlwind risk</p>	<p>Generally light in most areas with low whirlwind risk</p>	<p>Light in S England, stronger NW'ly expected further north.</p>
<p>Temps (also see graph p5) cooler in N+Central & becoming warmer in S+E</p>	<p>Cooler than normal in most areas</p>	<p>Warm especially in the SE</p>	<p>Cool in north & warmer by day in the south with cooler nights</p>
<p>Sky (see graph p5) becoming brighter</p>	<p>Generally overcast</p>	<p>Bright everywhere & sunny in the SE</p>	<p>Cloudy in the N & brighter or sunnier in S</p>

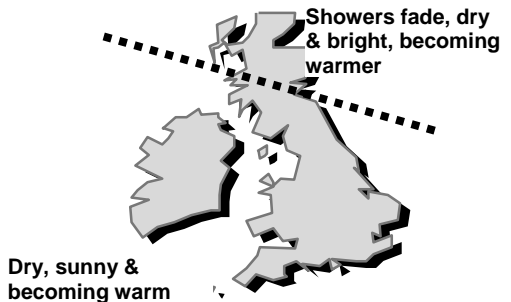
Most likely Detailed Weather - timing to 1 day. Likely success rate of weather periods this month is 7 or 8 basically successful out of the 9.

Solar factors Corrections to apply to standard short range Meteorology forecasts (Smfs) when they will come to be made on TV: **(Major) EA = Extra Activity** ie weather fronts (much) more active than Smfs as issued by Met Office/TV a few days ahead of events - making more rain, cloud, thunder, wind, whirlwind risk. **Sα, Sδ** etc types of **Sharp SWIP** (Solar Weather Impact Period) **Red Warnings** = potentially significantly more **extreme / dangerous** events. **Q= Quieter. NSF = No Specific Solar Factors. JSS = Jet Stream South tendency. JSN= Jet Stream Normal.**

15-17 JUNE 09 Extra detail 25May	18-21 JUNE 09 update v simil to 22Feb	22-24 JUNE 09 Update 25May=Wetter	25-28 JUNE 09 Update 25May more detail
Solar Factor Improvements to apply to TV forecasts: EA SWIP 15 th then NSF/Q	Solar Factor Improvements to apply to TV forecasts: MAJOR SWIP 19-21	Solar Factor Improvements to apply to TV forecasts: MAJOR EA ('red Spike') around 23 rd June	Solar Factor Improvements to apply to TV forecasts: MAJOR SWIP
<p>Heavy thundery showers turning less showery & cold, some flash floods</p> <p>Sharp thundery showers & cooler with flash flood risk. Mostly dry later</p>	<p>Blustery showers with hail. Cold and cloudy</p> <p>Some showers but brighter periods</p>	<p>Wet & windy with thundery hail showers, Very cool</p> <p>Some showers with mostly cold nights</p>	<p>Heavy thundery showers & hail with localized flooding possible</p> <p>Major deluges with hail, thunder and localized flooding, Whirlwinds likely</p>
<p>15-17 JUNE 2009 A = 85%</p> <p>Thundery showers expected with risk of flash floods; cool becoming drier.</p> <p>Likely possible weather map scenario: A brief increase in frontal activity as the low over Scandinavia deepens. Cold fronts tracks through Britain, Ireland & N France.</p>	<p>18-21 JUNE 2009 AB = 80%</p> <p>Thundery showers with hail, cool & cloudy in N; slightly warmer & brighter in S</p> <p>Likely possible weather map scenario: Low over Scandinavia deepens, Cold N'lys plunge over eastern Britain. High continues to sit over eastern mid Atlantic.</p>	<p>22-24 JUNE 2009 AB= 80%</p> <p>Showers in most places, thundery in the north but some brightness in the south (N/S division unclear)</p> <p>Likely possible weather map scenario: Deep low tracks north of Scotland and into Scandinavia but Azores high sitting south of Brit & Ireland.</p>	<p>25-28 JUNE 2009 BC = 70%</p> <p>Heavy thundery downpours including hail, and localised flooding possible</p> <p>Likely possible weather map scenario: Low deepens to the north of Scotland and active cold front sweeps across the British Isles. Azores high partially collapses.</p>
<p>Winds (also p5) Variable in direction with a high whirlwind risk around 15th</p>	<p>Locally strong winds with a high whirlwind risk 19th-21st</p>	<p>NW'yly in more northern parts & locally strong in showers, high whirlwind risk around 23rd</p>	<p>Locally strong from W'yly or SW'yly direction. V High whirlwind risk in the S</p>
<p>Temps (see graph p5) Generally cool in most places</p>	<p>Relatively cold in N & cool in S</p>	<p>Very cool in N and cool nights in S</p>	<p>Cool in most places</p>
<p>Sky (see graph p5) Generally Cloudy</p>	<p>Cloudy but brighter in SW Eng & S Ire</p>	<p>Cloudy further north</p>	<p>Mostly cloudy everywhere</p>

Most likely Detailed Weather - timing to 1 day. Likely success rate of weather periods this month is 7 or 8 basically successful out of the 9.

Solar factors Corrections to apply to standard short range Meteorology forecasts (Smfs) when they will come to be made on TV: **(Major) EA = Extra Activity** ie weather fronts (much) more active than Smfs as issued by Met Office/TV a few days ahead of events - making more rain, cloud, thunder, wind, whirlwind risk. **Sα, Sδ** etc types of **Sharp SWIP** (Solar Weather Impact Period) **Red Warnings** = potentially significantly more **extreme / dangerous** events. **Q**= Quieter. **NSF** = No Specific Solar Factors. **JSS** = Jet Stream South tendency. **JSN**= Jet Stream Normal.

29 JUNE - 1 JULY 09 25May New detail
Solar Factor Improvements to apply to TV forecasts: NSF/Q

29 JUNE – 1st JULY 2009 C = 65%
Becoming dry, bright and warmer everywhere, sunny in most places.
Likely possible weather map scenario: Azores high builds into Britain, Ireland and France as the low moves north and fills.
Winds (also p5) Light, with low whirlwind risk
Temps (see graph p5) Becoming warmer in most places
Sky (see graph p5) Bright in far north & Sunny everywhere else

WeatherAction World long range Extremes selected Forecast Events JUNE 09

From Solar Weather Technique parameters prod 22 Feb & updated 25 May. Videoed 29 May. See www.weatheraction.com for videos. Other extreme events such as thunderstorms tornados & whirlwinds are likely in other places around the world in those Solar Weather Impact Periods (SWIPs) which show high frontal activity (ie thunder / floods in places below).

Note on JUNE 2009. This June will see the continuing appearance of concentrated ‘SWIPS’ (Solar Weather Impact Periods) despite continuing general low level of OBSERVABLE solar activity. The continuing ‘quiet’ sun will nevertheless have implications so these forecasts – particularly geographical aspects and shifts - will be watched carefully.

Around **06- 09 June 09 (Ew0928) Most of Ireland & Britain (espec E/SE) & adjacent Europe (eg Netherlands/ Belgium/ N France). Major thunderstorms hail & local floods with whirlwinds likely (80% confidence).**

Around **06- 09 June 09 (Ew0929) East Australia – Queensland & Nth New South Wales. Deep lows off coast giving strong winds, floods & major coastal storms. (80% confidence).**

Around **06- 09 June 09 (Ew0930) West North Tropical Pacific. Typhoon formation, likely track towards N Philippines &/or Taiwan. Philippines or Taiwan hit 60%. (80% confidence).**

Around **06- 09 June 09 (Ew0931) East Pacific. Typhoon formation in Ocean some way off Mexico, landfall unlikely. (80% confidence).**

Around **06- 09 June 09 (Ew0932) Bay Of Bengal. Tropical Cyclone (or Tropical Depression) formation, likely short lived. Landfall unlikely (80% confidence).**

Around **18-21 June 09 (Ew0933) Eat Pacific. Typhoon form, well in Ocean W of Mexico. No land hit. (80% confid).**

Around **22-24 June 09 (Ew0934) Central & Central South USA & Central N/E USA & SE Canada, Major thunderstorms. Local floods & widespread ‘killer’ tornadoes especially in Plains (80% confidence).**

Around **25-28 June 09 (Ew0935) West North Tropical Pacific. Typhoon formation East of Taiwan / S of Japan. likely track towards East China sea. Land influence likely, land hit 50%. (70% confidence).**

SWT Extreme Event forecast scores 85%, USA/Canada 94%

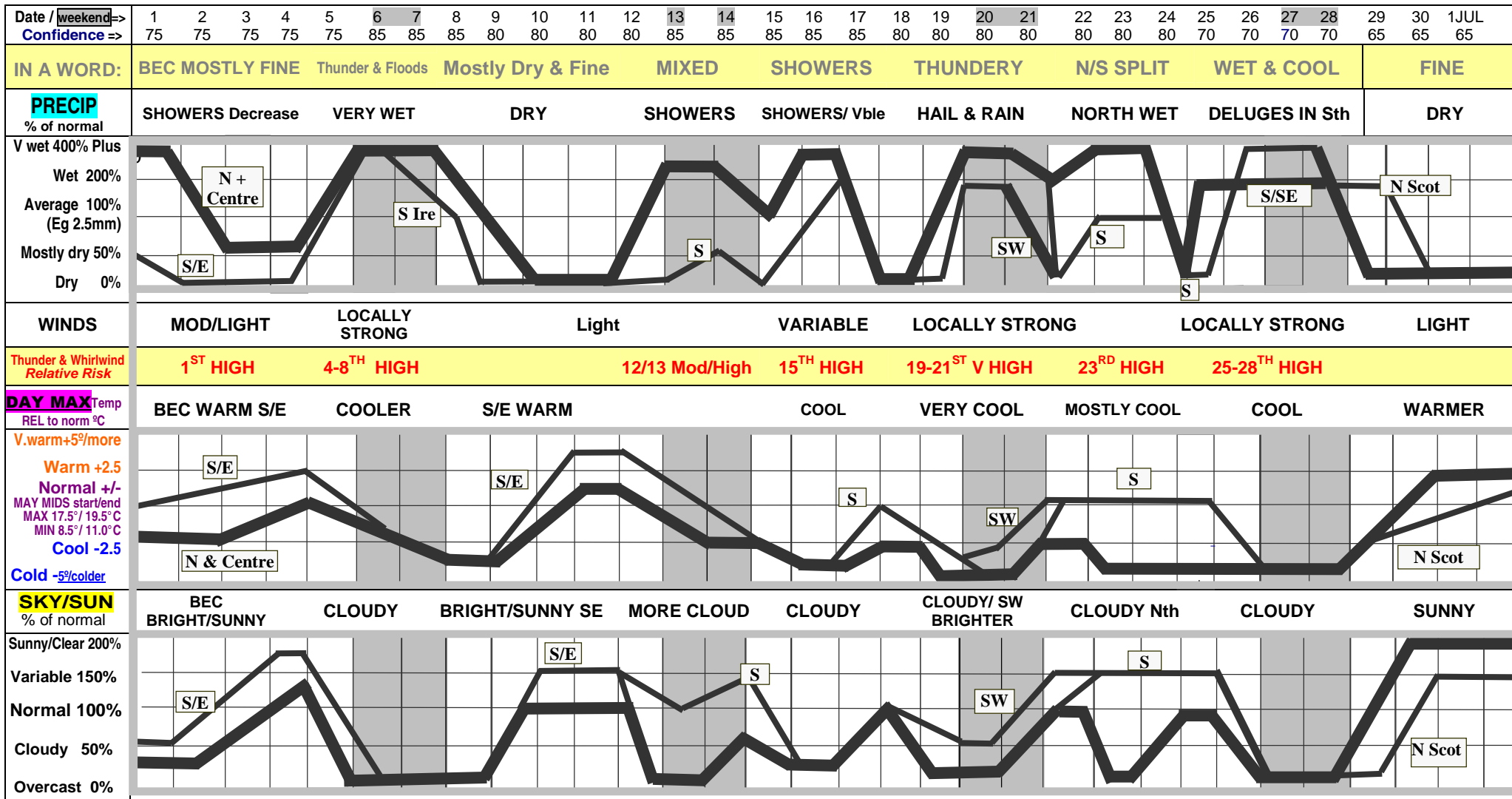
WeatherAction Audited World Extreme event forecasts for specific storm / snow deluges/ heatwave &c extremes March 08 to April09 scored 63/74 = 85%. For **USA / Canada** the basic score was 9/9 or 8.5/9 = 94% on stronger criteria. The ‘luck level’ success rate of many of these forecasts if it were down to chance would prob be around 10%. Full Reports available.

Easy Look Forecast Graph BRITAIN & IRELAND JUNE 2009: 30d ahead update. SWT. Normally accurate to 1 day

Showing likely rain, temperature & 'clearness/brightness' levels around dates shown, NOT PRECISE DAILY PREDICTIONS. Weekends & hols shaded. 1961-90 norms standard.

Thin line = Region. Thick line = Rest of Brit & Ireland For confidence of each weather period forecast refer to Date row. For possible Alternative Scenarios see notes on maps

For Solar Factor improvements to Standard Met Short range forecasts when they become available a few days ahead of weather refer to map-tables.



Weekend Watch The weekends this June tend to generally be the wettest periods. There will be a North/South splits with more rain in the North relative to normal than the South (especially on 13th/14th) until the last weekend which is expected to have deluges in the South.

Devastating Tropical Cyclone Aila – Did so many have to die? (continued from p1)

Aila is described as one of the worst storms to hit parts of West Bengal in 20 years (<http://www.reliefweb.int/rw/rwb.nsf/db900sid/EDIS-7SHL7B?OpenDocument>) and other damage is less well documented. At WeatherAction's Press conference on May 29th Piers said 'It is tragic that WeatherAction's warning of this major event (which we designated with the highest, 85%, confidence level) – was not given more attention. If standard meteorology predicted such a storm as long ahead as we did and claimed it was caused by mankind's CO2 we can be sure more attention would have been taken and large scale evacuations undertaken. The Authorities must put testable science and saving lives before ideology and political opportunism. We need WEXFAD – an international effort for Weather EXtreme Forecasting And Defence.

For animated film of Aila click:

090525TCAilaAnimGif200902_sat_anim.gif

For original WeatherAction warnings: [MUST SEE VIDEO: Weatheraction.Com Meeting & Warning of Extreme Weather Events for April 2009 - YouTube](http://www.weatheraction.com) <http://climaterrealists.com/news.php?id=3131>

JUNE 2009 SWT25d Britain & Ireland Forecast deviations from normal (1961-90 averages).

PRECIPITATION	MAX TEMPERATURE	SUNSHINE/ SKY
<p>Precipitation percentage of normal</p> <p>140-200%</p> <p>100-150%</p> <p>85-110%</p>	<p>MAX TEMPS</p> <p>Temp deviations from local norm deg C</p> <p>-1.5 to -2.5C</p> <p>-1.0 to -2.0C</p> <p>-0.3 to -1.3C</p>	<p>Sunshine percentage of normal</p> <p>55% - 80%</p> <p>75% - 95%</p> <p>90% to 110%</p>
Precip: N/S split. Wet/v wet in Nth. Close to norm Sth	MAX Temps: Cool, particularly further north	Sky: Cloudier than norm in Nth. Close to normal Sth

Confidence. Confidence order of main parameters for this MAY 2009 is: RTS, i.e. SWT25d is more confident of Rain this month. **Main Uncertainties:** N/S divides. **Important information on Confidence and Timing of weather events and weather periods.**

The headline summary (page 1) is the most confident summary statement about the month. The essential weather type development (page 1) gives essential developments through the month. The detailed most likely weather periods, typically of around 4 days, are the Solar Weather Technique highest resolution long range forecast detail. They are not to be taken as exact prediction and include confidence levels. The weather period timings in period details (p 2 –4) are most likely core time periods for the weather events or weather types specified. If the events / types occur the core time periods should include the specified events / types on at least 85% of occasions; with a probability of 15% or less that they occur in the wings of an extended time period which is one or two days longer than the given core on each side* The time window does not mean that all that period will have certain (eg) extreme events but that they are expected to occur at some time during that period. The most probable sub-parts of periods for events may also be stated. [*Or poss longer in: (i) long weather periods, (ii) longest range forecasts where 1% uncertainty in 300 days ahead is 3 days or (iii) where consecutive weather periods are similar].

Confidences 'A' - about 85% chance of being essentially right & 15% of being in error.
 'B' - about 75% chance of being essentially right & 25% of being in error.
 'C' - about 65% chance of being essentially right & 35% of being in error.

Comparative info
JUNE 2009 (SWT 25d) compare with 130day ahead 25d(0)
 Similar but more N/S contrast.