



Special Subscribers only* Update WA13No48s “18-20...Nov Cold snowy blast or Poodle?”

* Available later to public

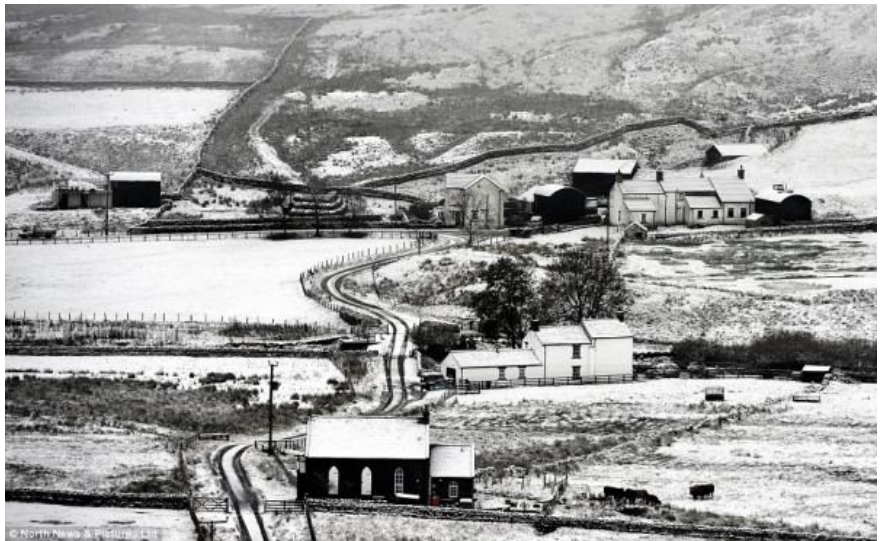
News and Latest / Comments www.WeatherAction.com +442079399946 / +447908734296

This Update-News-Comment for 30d forecast subscribers is the same as in WeatherAction BI DEC 45d forecast of 16 Nov

Cold Blasts Britain+ Europe & USA on WeatherAction cue ~4-8th Nov **NEWS**

WeatherAction's forecast cold blasts for ~4-8th Nov (+/-1day) due to major jet stream shifts and a top Red **R5** period were on cue both sides of the Atlantic. Snow hit parts of N England Nov5*.

* PIC: <http://www.dailymail.co.uk/news/article-2487760/UK-weather-Bonfire-Nights-white-Snow-falls-Northern-hills-temperatures-dipping-freezing-point.html#ixzz2jpidPIP4>



WeatherAction predicted the BI+Europe cold blast ~4-8th Nov 19 days ahead and standard Met denied it for weeks but it came. Piers Corbyn said Nov 6: "We are really pleased with this snow. It came bang-on the cue of our cold blast ~4-8 Nov as predicted in detail 3 weeks ahead **against** standard models. There has been less snow in the cold blast than we hoped from 3 weeks ago but standard Met didn't see it coming until it was upon us".

Will the ‘Snowy North blast’ ~18-20.... Nov in TV forecasts “poodle-out”? **UPDATE/COMMENT**

- WeatherAction Subscribers Update, see also: <http://bit.ly/1ar5Saq>

Piers Corbyn said, Nov16th: “This BBC-MetO forecast has received a lot of media attention. It is very different from our WeatherAction mild wet and windy (~17-19th) 4 week ahead scenario for ~those days; so, many are wondering if it will “poodle-out” rather like a similar ‘Beast From The East’ BBC-MetO forecast last December flipped to our view.

Cold blast or Poodle/Spaniel?

“As I said earlier on 16th we do not now think our 4 week ahead forecast will get the mild weather we expected through this period but we also think the cold and snow will not meet the TV projections and the whole system 18-20th & further will get milder much quicker than standard models expect because the mild push from the West will be energised by our **R5 ~17-19th** – perhaps not a “poodle-out”, more a “Spaniel-out!”

Interestingly The UK MetO map (Right) issued on 16th for Wed 20th12z– is much more like (compared with maps issued a few days earlier) our ~17-19th Long-Range map** scenario for the UK + Eire.

By the end of the week we expect the weather to be back closer to our Long Range view”

[**as available to B+I 45d + Eu 30d subscribers]

