

Now new X5 & M6 flares from giant sunspot region drive great aurora, major weather events & huge earthquake

- ⇒ Giant region AR1429 gives X5 flare 7Mar 0028 UT & M6 Flare 9Mar 0358UT
- ⇒ Major Aurora in N Hemisphere 8/9 Mar
- ⇒ M6.7 Quake hits Vanuatu 9 Mar 0710UT
- ⇒ Quakes backs Piers' propositions at Astro meeting 24 Feb
- ⇒ New solar wind blast will drive new Red warnings & quakes 11-14th

Major active region AR1429 has given tremendous solar flare events which under Piers Corbyn's Solar-Lunar technique drove extreme geomagnetic, weather, and earthquake events world-wide; with, in this case, quakes and weather extremes concentrated in the Pacific region.

"The largest quake and weather events appeared on March 9th as AR24 became Earth-facing (below). This supports my propositions – put to an Astro meeting on 24 Feb that quakes tend to be triggered by such situations and that it might be the rate of change of solar-earth magnetic connections which are also important - which in this case have given major quakes each side of our original Mar 6-7 most likely quake period – one 'early' (in Argentina see right) and one 'late' in Vanuatu S Pacific", says Piers. Storm/flood and landslides of the previous days hit a new severity in Hawaii also on Mar9 <http://on.doi.gov/5o973F> , <http://bit.ly/wElntU>

• Expected next solar wind hits coincide with Weather Action weather+quake RTQ (link below) warnings ~11-15 Mar:

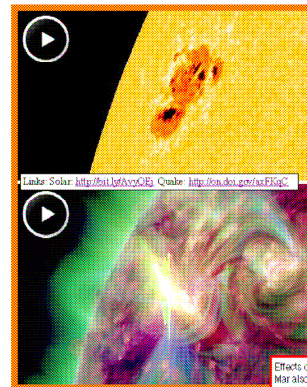


WA12No12 Mar4 Delta House, 175 Borough High St, London SE1 1HR
www.weatheraction.com http://twitter.com/Piers_Corbyn
piers@weatheraction.com +44(0)207939 9946 +44(0)7958713320
 This is <http://www.weatheraction.com/docs/WANews12No12.pdf>

Prof Richard Lindzen *Global Warming: How to approach the Science*. YouTube <http://bit.ly/w9umKP>

New X flare marks predicted major Solar, weather & Quake period ~ 6-7 March

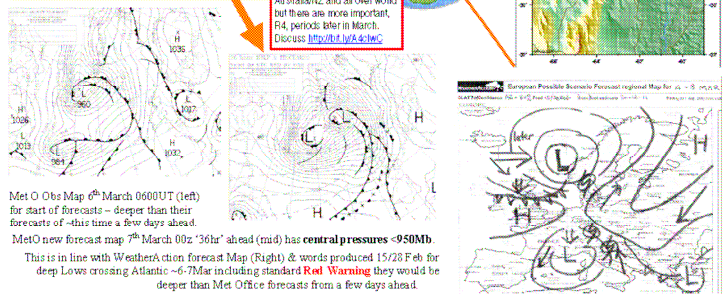
- Long range WeatherAction forecasts confirmed
- ⇒ New Solar Active region AR1429 gives X flare 5th March 0413 UT
- ⇒ M6.1 Quake hits Argentina 5th March 0746 UT
- ⇒ Observed Lows 6th March 00UT deeper than Met O forecast
- ⇒ Very deep Atlantic lows appear in forecasts charts March 6th-7th as predicted by WeatherAction weeks earlier.



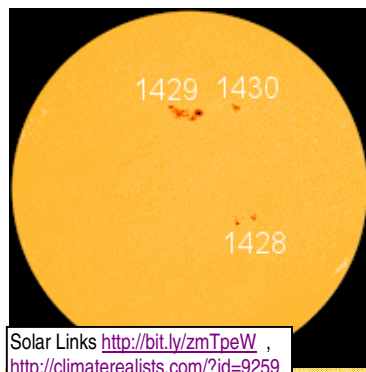
WeatherAction's 'R3' Red warning of around 6-7 March for notable extra weather activity and Major quake (trial) risk, predicted by Piers Corbyn's Solar Lunar Action Technique (SLAT) was heralded on 5th March by an X1 class solar flare.

Sun=> Earth Travel times Light takes 8 minutes to travel the sun-earth 93 million miles, and particles traveling at half the speed of light take about 1/4 of an hour, and so on. Average solar wind takes about 4 days but WeatherAction's SLAT is mainly about more rapid effects.

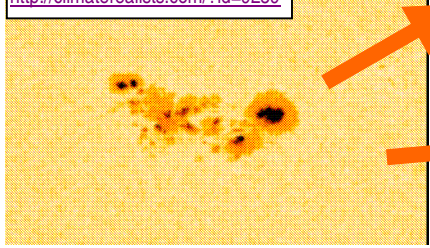
"The strongest effects from this in high energy particles hit Earth in minutes & hours after the X flare and probably triggered the M6.3 quake 3 1/2 hrs later in Argentina", said Piers, "confirming our Q warning for -6-7 Mar (+/-1 day)". "At the same time the atmospheric effects considerably deepened Atlantic Low pressures compared with Met O forecasts. The new deeper observed lows (eg 960mb 00 UT 6th March) then give a new starting point for standard Meteorology which has them developing further as they cross the Atlantic to central Pressure <950mb at 00UT 7th March - in line with our forecast of deep Atlantic Lows around 6-7 Mar prod 15/28 Feb"



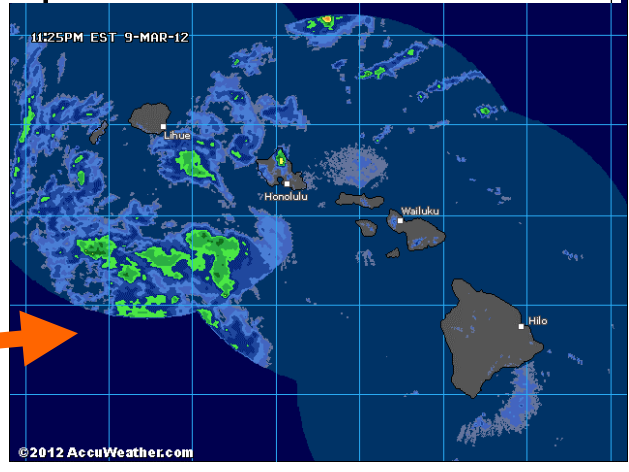
Game-changing Monthly forecasts On-Line up to 30 / 45 days ahead <http://bit.ly/utWrvj>
 • UK + Ire maps & graphs: 30day (6pages); 45day ahead (4pages) • Euromaps Region weather + Pressure maps (9, 8 pages)
 • USA maps – scenarios, extremes + dangerous weather (10p) • World Extremes, Red Warnings, Tornado, Quake (Trial) (RTQ) (1p)
 Longer range forecasts up to 12 months ahead piers@WeatherAction.com +44(0)2079399946



Solar Links <http://bit.ly/zmTpeW> , <http://climaterealist.com/?id=9259>



11-12	R2	High	High	11-14 th QV Extra Major Earthquake & Major Volcano Earth facing holes / active regions likely near centre solar disc Quakes M6+likely Pacific ring - North Hemisphere probably preferred.
13-15	R4	V High	V High	



Game-changing Monthly forecasts On-Line up to 30 / 45 days ahead <http://bit.ly/utWrvj>
 • UK + Ire maps & graphs; 30day (6pages); 45day ahead (4pages) • Euromaps Region weather + Pressure maps (9, 8 pages)
 • USA maps – scenarios, extremes + dangerous weather (10pg) • World Extremes, Red Warnings, Tornado, Quake (Trial) (RTQ) (1pg)
 Longer range forecasts up to 12 months ahead piers@WeatherAction.com +44(0)2079399946