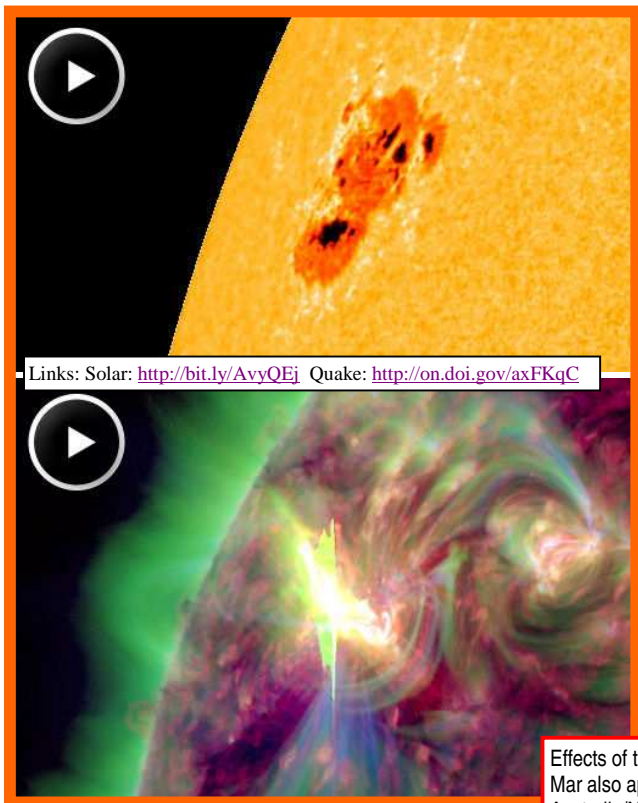


New X flare marks predicted major Solar, weather & Quake period ~ 6-7 March

• Long range WeatherAction forecasts confirmed

- ⇒ New Solar Active region AR1429 gives X flare 5th March 0413 UT
- ⇒ **M6.1** Quake hits Argentina 5th March 0746 UT
- ⇒ Observed Lows 6th March 00UT deeper than Met O forecast
- ⇒ Very deep Atlantic lows appear in forecasts charts March 6th-7th as predicted by WeatherAction weeks earlier.

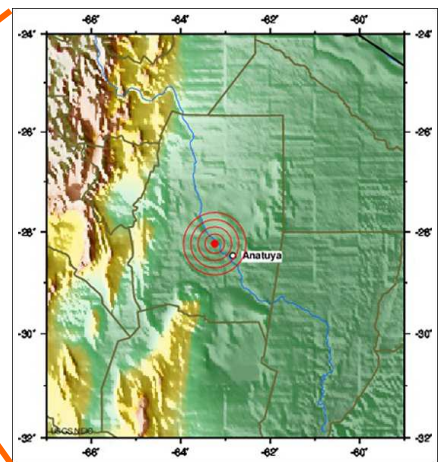
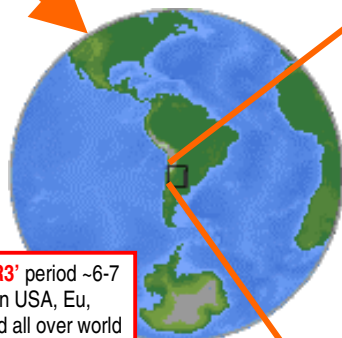
Sun=> Earth Travel times
 Light takes 8 minutes to travel the sun-earth 93 million miles, and particles traveling at half the speed of light take about 1/4 of an hour, and so on. Average solar wind takes about 4 days but WeatherAction's SLAT is mainly about more rapid effects.



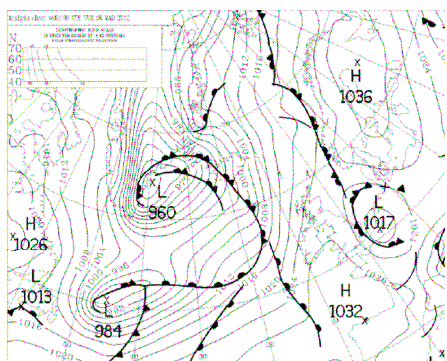
Links: Solar: <http://bit.ly/AvyQEj> Quake: <http://on.doi.gov/axFKqC>

WeatherAction's '**R3**' Red warning of around 6-7 March for notable extra weather activity and Major quake (trial) risk predicted by Piers Corbyn's Solar Lunar Action Technique (SLAT7) was heralded on 5th March by an X1 class solar flare.

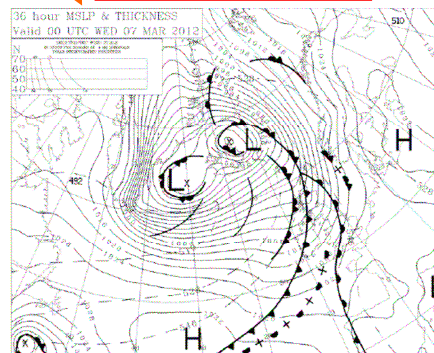
"The strongest effects from this in high energy particles hit Earth in minutes & hours after the X flare and probably triggered the **M 6.1** quake 3 1/2 hrs later in Argentina", said Piers, "confirming our **Q** warning for ~6-7 Mar (+/-1 day)". "At the same time the atmospheric effects considerably deepened Atlantic Low pressures compared with Met O forecasts. The new deeper observed lows (eg 960mb 00UT 6th March) then give a new starting point for standard Meteorology which has them developing further as they cross the Atlantic to central Pressure <950mb at 00UT 7th March -in line with our forecast of deep Atlantic Lows around 6-7 Mar prod 15/28 Feb"



Effects of this '**R3**' period ~6-7 Mar also apply in USA, Eu, Australia/NZ and all over world but there are more important, **R4**, periods later in March. Discuss <http://bit.ly/A4clwC>

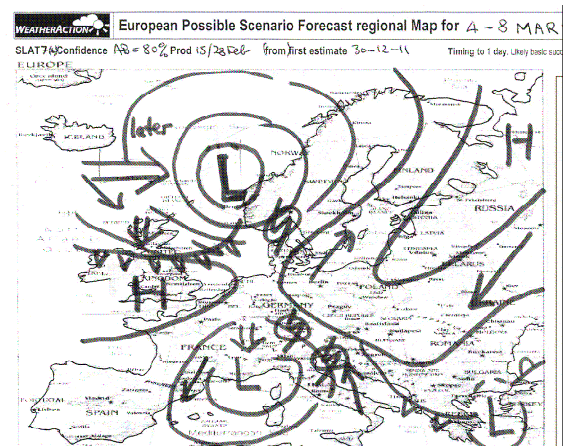


Met O Obs Map 6th March 0600UT (left) for start of forecasts – deeper than their forecasts of ~this time a few days ahead.



MetO new forecast map 7th March 00z '36hr' ahead (mid) has central pressures <950Mb.

This is in line with WeatherAction forecast Map (Right) & words produced 15/28 Feb for deep Lows crossing Atlantic ~6-7Mar including standard **Red Warning** they would be deeper than Met Office forecasts from a few days ahead.



Game-changing Monthly forecasts On-Line up to 30 / 45 days ahead <http://bit.ly/utWrvj>

- UK + Ire maps & graphs; 30day (6pages); 45day ahead (4pages)
- Euromaps Region weather + Pressure maps (9, 8 pages)
- USA maps – scenarios, extremes + dangerous weather (10p)
- World Extremes, **Red Warnings**, **Tornado**, **Quake (Trial) (RTQ)** (1p)

Longer range forecasts up to 12 months ahead piers@WeatherAction.com +44(0)2079399946