

World-wide end Feb-start March dangerous weather extremes driven by predicted solar activity

• More dangerous weather predicted for March

The 'Canyon of fire' shown on NE solar limb 25 Feb which faced Earth in following days and the Earth-facing coronal hole 29 Feb confirmed WeatherAction's long range forecast (below) for major events on the sun ~27-29 Feb and consequential specific and general extreme weather to within one day from 4 weeks ahead.

See <http://bit.ly/zmlaG8>, <http://bit.ly/y2rJYQ> <http://www.weatheraction.com/docs/WANews12No10.pdf>

28-29	R5+	V High	V High	QV Extra Major Earthquake & Major Volcano Earth facing Coronal Holes likely above centre of solar disc Quakes in range M6.5 to 8 likely. Pacific ring South Hemisphere possibly preferred.
Amended to 27-29 +/- 1 day				

USA tornado devastation



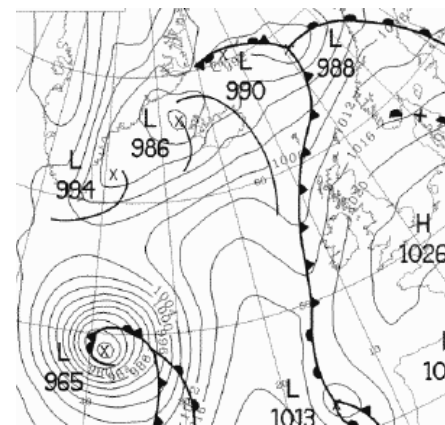
"Snow in NE USA ~29Feb and major tornado activity MidWest & S/E USA at start of March were driven by our Top Red (R5) Solar Factor predicted 30 days ahead for weather effect around Feb 28-March 1 (with uncertainties/extensions ~1day) which triggered these events", says Piers Corbyn Astrophysicist WeatherAction.com.

The next weather period includes thundery enhancements ('R3') around Mar 6-7th and more seriously **two 'R4'** (almost as severe as 'R5') Red warning periods on the way in March will bring major thunder and tornado developments USA. See WeatherAction USA maps March forecast (link below).

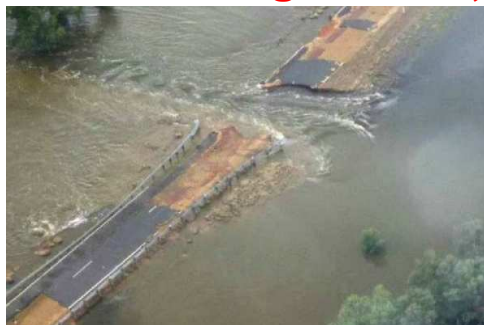
The reason why these tornado events are so 'early' in the year is because specific factors under our Solar-Lunar-Action-Technique have come together now. All these extreme tornado events are solar driven and predictable. Indeed we explicitly predicted from 3 weeks ahead the tornado swarm which destroyed Joplin 22/23 May 2011 to within a day and warned Missouri was vulnerable: See <http://twitpic.com/51d5k0/full> , <http://bit.ly/l4fKOD> , <http://bbc.in/zHIY1u> <http://climaterrealists.com/?id=9221>

Atlantic, Brit & Ire 'crazy' weather maps

Met Office forecasts for end Feb/early March period were 'all over the place' as (R5 solar driven) very deep lows and 'trains of Lows' (Obs 00hrs Mar1 Right) popped up. Although map developments were very complex and beyond the grasp of standard forecasts, WeatherAction forecasts (from 60day ahead & confirmed in 15d update) of a N'y blast in the first few days of March with snow / wintry showers in East UK in the wake of a deep low were confirmed while others dithered to the end. See <http://bit.ly/yRJOt5> Gareth Comment.

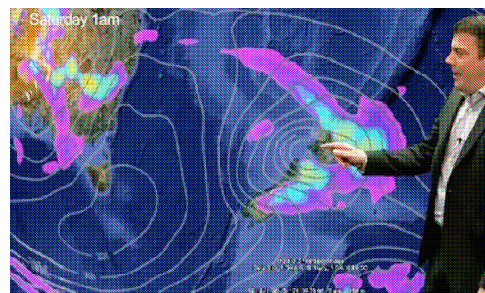


Australia huge floods, super-Low Tasman Sea



The present stupendous Australian floods are solar-lunar driven and their likely recurrence this year was warned by WeatherAction 13mth ago, subject to La Nina - which occurred as expected. See <http://www.weatheraction.com/docs/WANews11No1.pdf>
 • The Australian Govt is however not interested, instead following delusional CO2 religion which predicts nothing.

WeatherAction's **R5 hit** is exacerbating the Australian floods especially in NSW and drove the 'Weather Bomb' Low (right) which crossed the Tasman Sea and trashed much of New Zealand **simultaneously** with USA tornadic devastation.



<http://www.abc.net.au/news/2012-03-04/evacuations-continue-as-towns-go-under/3867670?section=nsw>

Game-changing Monthly forecasts On-Line up to 30 / 45 days ahead <http://bit.ly/utWrVj>

- UK + Ire maps & graphs; 30day (6pages); 45day ahead (4pages)
- Euromaps Region weather + Pressure maps (9, 8 pages)
- USA maps – scenarios, extremes + dangerous weather (10p)
- World Extremes, **R**ed Warnings, **T**ornado, **Q**uake (Trial) (RTQ)

Longer range forecasts up to 12 months ahead piers@WeatherAction.com +44(0)2079399946