



**Cruel winter of
2010 News No7**

www.weatheraction.com Delta House, 175-177 Borough High Street. London SE1 1HR Tel +44207939 9946
From Piers Corbyn+44(0)7958713320 piers@weatheraction.com

MUST WATCH!!

**Onward! The Climate Scam must
be stopped!**

Piers Corbyn calls on Prime Minister
Gordon Brown to hold debate promised
<http://www.youtube.com/watch?v=EAV7NHZcEcY>

More snow UK confirms WeatherAction long range forecast for LONG cold spell

Simultaneous snow blasts in USA & North China confirm WeatherAction world extremes forecast

• **Solar driven action
in the stratosphere &
jet stream show why
revolutionary
forecasts work**

• **Mild, wet windy
weather to sweep Brit
& Ireland last week Jan
- as forecast**



Snow hits London AGAIN (read windscreen!) 12/13 Jan, causing disruption to trains & roads. Snow heavier than MetOffice expected but in line with WeatherAction long range detailed warning for extra activity and drifting snow 11-13th <http://tinyurl.com/ycmfhw>

• **Return of ice & snow in FEB - WeatherAction warns again**

The wave of new snow sweeping parts of Wales & England on 19th/20th Jan confirms, *again*, the accuracy of WeatherAction's long range forecast made 6 months ago for **prolonged** cold snowy weather and its **DETAIL** issued in December "Our long range forecast and **public warnings** issued on Jan 1st, 4th, 6th & 10th (WA News Nos 1, 2, 3 via www.weatheraction.com & Sky News 10 Jan*) well ahead of any TV / Met Office 'nowcast warnings' have been well confirmed and our specific **Red Warnings** of the dates of deluges have also been well confirmed", said Piers Corbyn, astrophysicist of WeatherAction long range forecasters.

"It now appears that the Met Office / standard meteorology also agree that the return of proper mild weather in Britain & Ireland – which they have prematurely heralded a number of times - will come when we said it would – from 24th Jan, as we specifically announced on Sky TV as *mild or very mild weather 24-31 Jan* (* Piers Corbyn & Francis Wilson on Sky TV Jan 10th = <http://climaterealist.com/index.php?id=4853>)

See the stratosphere and jet stream move - turning solar-magnetic action into weather! - World-wide Solar Weather Impact period 18-20 Jan

"This snowy blast around 18th-20th is especially important because it is caused by a Major Solar Weather Impact Period (SWIP) which we predicted for 18-20 Jan and which we forecast would also cause other specific snow & ice deluges and cold blasts in East USA and North China – *which are now taking place* (see over). It's really exciting to see sudden increases in solar activity – eg new C, M & S solar flares on 17, 18 & 19 Jan <http://www.swpc.noaa.gov/ftpd/ir/latest/DSD.txt> and associated sudden changes in the jet stream and polar regions happening now in line with our forecast. Watch an animation of N hemisphere jet stream and notice how the N pole region suddenly shows lots of changes (longer blue arrows) around 18th-20th and sends a great blast of very cold air towards East Russia & North China (http://squall.sfsu.edu/scripts/nhemjetstream_model.html and choose 6hr steps). At the same time a sudden North Polar stratospheric warming is taking place (<http://strat-www.met.fu-berlin.de/cgi-bin/times?plot=temps&alert=1>) which is a very significant expression of this sudden agitation of the jet stream & polar regions driven by the major SWIP we predicted months ago.

"Standard meteorology and Global warming dogma cannot predict these events because they have no recognition or understanding of the solar drivers which cause them. THAT is why all their efforts at long range and climate forecasting are absolutely doomed to fail however large their computers".

This sudden warming of the N polar stratosphere – 8 miles up – does NOT mean the arctic ground area is warmer, it is definitely not. Indeed contrary to the mild winter forecast of the Global Warmers & standard meteorology /over.....

the Arctic is now 5degC colder than normal (<http://ocean.dmi.dk/arctic/meant80n.uk.php>). This is a good prelude to our forecast issued 6 months ago for a cold/very cold February the DETAILS of which are now available in 7 time periods through Feb. [Visit: <http://www.weatheraction.com/member.asp> and choose 45day forecast. The world extreme events forecast also available via this link includes USA, China/Korea and Australasia & Indian Ocean long range extreme event forecasts].

Blizzards & extreme cold thrash N China

BEIJING — Closed roads and delayed flights left thousands of travellers stranded Tuesday (19th) following blizzards and extreme cold that killed four people and affected 1.6 million others in northwestern China, a government spokesman said. Pic Emergency transport efforts in Mongolia – <http://tinyurl.com/y9ls6bz>

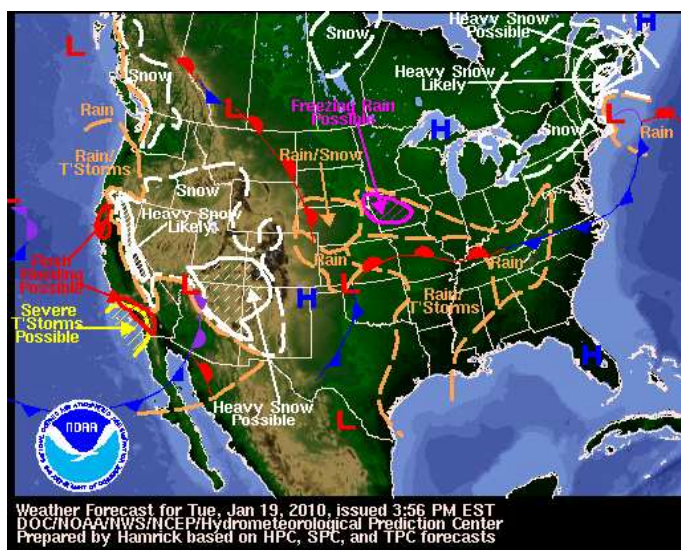


More snow & storms lash USA →

• This same SWIP 18-20 Jan caused floods & storms in Middle East <http://news.bbc.co.uk/weather/hi/news>

Rare summer snow in Australia!

The first snow since records began in 1965 in Bombala New South Wales recently <http://tinyurl.com/ybkrbtr>. One wonders what now happens to the BBC's barmy balmy spin 'Ah don't worry about these snowdrifts in the UK - it's warm elsewhere'. See David Shukman's 1984 doublethink style revision of reality via WANewsNo6 for more = <http://climaterrealists.com/index.php?id=4885&linkbox=true&position=1>



Weather Forecast for Tue, Jan 19, 2010, issued 3:56 PM EST
DOC/NOAA/NWS/NCEP/Hydrological Prediction Center
Prepared by Hamrick based on HPC, SPC, and TPC forecasts

Heavy snow NE USA etc 19th Jan confirms WeatherAction forecast

Will they ever learn?

Piers said "This ongoing cold winter has put the Met Office, standard meteorology, global warmers and state media into denial of reality. The BBC World at One Radio 4, (Martha Kearney, 13th Jan 13.25hrs) stated that *no-one could have predicted that this cold spell could have been so bad (/prolonged)*. **The fact is we did just that** in WeatherAction and the BBC were made very aware of it, and attended the WeatherAction conference where we publicly announced it on Oct 28th (see kanetv video link below) but they didn't warn the public. Roger Harrabin BBC Environment Analyst has not yet acknowledged or responded to my letter to him on such serious matters - <http://climaterrealists.com/index.php?id=4905>

"When the denials of reality continue in February I urge everyone who cares about the truth to immediately complain to the media concerned and demand immediate action from their MP", said Piers

Useful Extras.....

THE science deniers Empire is hitting the iceberg of truth – again!

NASA AND NOAA CAUGHT IN CLIMATE DATA MANIPULATION

NEW REVELATIONS HEADLINED ON KUSI-TV CLIMATE SPECIAL Climate researchers have discovered that NASA and NOAA scientists improperly **manipulated data** in order to claim 2005 as "THE WARMEST YEAR ON RECORD." KUSI-TV meteorologist, Weather Channel founder, and iconic weatherman John Coleman presents these findings in a one-hour special airing on KUSI-TV: www.kusi.com (also see for USA storm details assoc with SWIP 18-20 Jan) & <http://icecap.us/images/uploads/NOAAroleinclimategate.pdf>

STOP use of fraudulent data! – Please SIGN Downing St Petition!

<http://petitions.number10.gov.uk/UEACRU/> - 'We the undersigned petition the Prime Minister to suspend the Climate Research Unit at the University of East Anglia from preparation of any Government Climate Statistics until the various allegations have been fully investigated by an independent body.' *The link is easy to use. It Emails you back for 'signature' confirmation.*

Please sign & forward to someone else to sign. ASK ALL WOULD BE CANDIDATES IN THE ELECTION (they have been chosen already) to sign and make it clear you will not vote for anyone who doesn't sign this petition

VIDEO How the Solar Weather Technique Works www.kane-tv.com/wa/youtube & see Piers3 parts 1, 2, 3