



# Cruel winter of 2010 News No6

[www.weatheraction.com](http://www.weatheraction.com) Delta House, 175-177 Borough High Street. London SE1 1HR Tel +44207939 9946  
From Piers Corbyn+44(0)7958713320 [piers@weatheraction.com](mailto:piers@weatheraction.com)

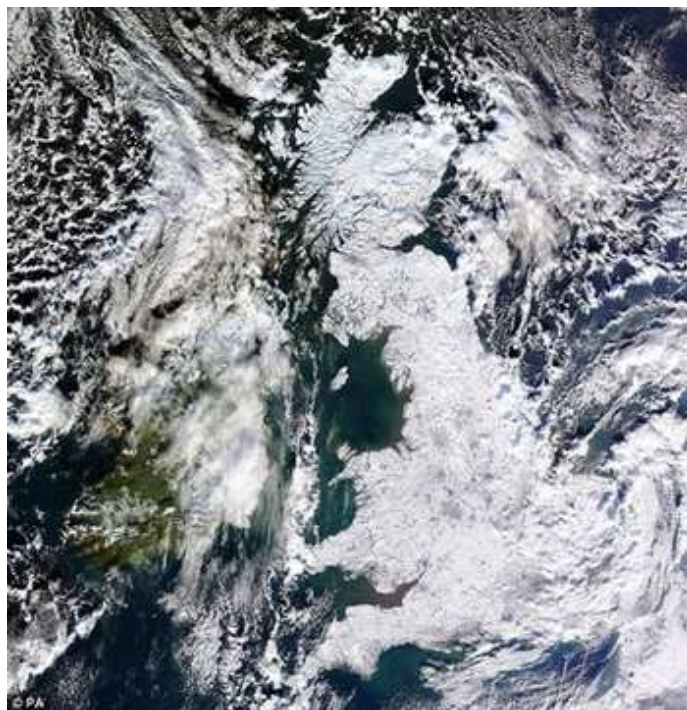
## MUST WATCH!!

Onward! The Climate Scam must be stopped!

Piers Corbyn calls on Prime Minister Gordon Brown to hold debate promised  
<http://www.youtube.com/watch?v=EAV7NHZcEcY>

# Met Office hides forecast failings behind nowcast spin as Warmers' Empire crumbles

- **Met Office self congrats “misplaced”**
- **Short range forecasts could be improved dramatically by Solar Weather Technique**
- **Met Office Season ahead & Climate forecasts - total failure and should be scrapped**
- **Whole Met Office-BBC-NASA-UN-politicians-Global Warmers Empire crashing under **new revelations****



## CRUEL WINTER GREETINGS! →

Snow covered Britain & Ireland from Space (NASA photo 7th Jan 2010) confirming WeatherAction Long range forecast issued July 2009, ahead of all others.

The Met Office mild UK winter forecast failed - as did all their forecasts for the previous 4 unusual seasons - leaving emergency services and public misled and ill-prepared; and led to the current **unnecessary suffering & loss of life.** For these seasons that matter Met Office scored 0/5, WeatherAction scored 5/5.

The Met Office “*The Big Chill how did we do?*” report ( <http://www.metoffice.gov.uk/corporate/pressoffice/2010/pr20100114.html> ) 14th Jan is misplaced nowcast spin put out to hide their dire forecast failings and their denial of the failure of Global warming dogma”, said Piers Corbyn astrophysicist of WeatherAction.com long range forecasters. “Most of the MO warnings of extreme snow in the UK in the last few weeks were really current weather descriptions. There is nothing wrong in that; in fact it is useful but to portray them as warnings with much vaunted skill is over the top – especially when WeatherAction issued similar warnings for these same time periods weeks ahead.

A close look reveals that in fact 24 hours or so ahead the Met Office significantly underestimated snowfall or frontal activity in a number of instances and **when these mistakes would occur was predicted by WeatherAction weeks ahead** (see box). It’s a ‘no-brainer’ to say short range forecasting can be significantly improved by the application of our Solar Weather Technique and we explained how this can be done at our conference in Imperial College on Oct 28<sup>th</sup> ( [www.kane-tv.com/wa/youtube](http://www.kane-tv.com/wa/youtube) and look at piers 3 - part3 ).

The assessment the UK needs now is not M.O. desperate misplaced self congratulations but answers to two questions:

1. **Why have the Met Office season ahead forecasts failed** so totally and with such devastating cost in economic terms (£billions), human misery and deaths - due to, eg, unsalted roads as UK road salt ran out in most practical terms – as WeatherAction warned it would this winter and last winter; and the cost of flood unready-ness in summers 07, 08 & 09.
2. **Why have all the CLIMATE projections of the Met Office & UN (IPCC) for ongoing warming, milder winters and baking summers in the UK Europe & USA failed totally in the last 7 years while CO2 has been rising rapidly.**

### WeatherAction improves short range TV forecasts

WeatherAction's 'Extra Activity' days/periods EXCELLENTLY warned when the TV / Met office forecasts would notably underestimate the strength / extent of snow (or precipitation). See pdf WA 30day ahead forecast for the dates via:

<http://www.weatheraction.com/member.asp> The most recent three Extra Activity / RedWarning dates being (specified to within a day):-  
5/6 Jan = much more snow than MO forecast – as warned by WA Red Warning  
8/9/(10) Jan = Compared with 24 hr ahead MO forecast areas of activity were more extensive and maybe more in terms of total precip which came through faster in the SouthEast & so deemed 'lower' – consistent with WA Red Warning  
12 Jan = notably more snow on 12/13<sup>th</sup> – 12<sup>th</sup> was the day specified by WA for 'Extra Activity'.

See also Piers Corbyn & Francis Wilson on Sky Jan 10<sup>th</sup> = <http://climaterealist.com/index.php?id=4853>

It is unlikely that the Met Office can or will answer these questions just as the banks and leading economists had difficulty in explaining to the Queen why they hadn't seen the banking crisis coming (which they themselves had caused by creating a bubble of false value).

The Met office 'explanation' for their failed Season ahead forecasts is something like 'it's hard' – which indeed it is for them; and helpfully for them the BBC falsely claims *'no-one predicted the cold weather would carry on so long'* (see box).

The scientific reason for their failure is simple: **Their models do not describe**

**reality & rely for testing on fraudulently produced data such as from the Univ of East Anglia.**

It's simply rubbish in gives rubbish out – as we explained in a letter to BBC's Gavin Esler –inset above (link below).

So MO Season forecasts fail because of their reliance on data and methods which emanate from their Global Warming wing of failed science and falsified data. They say their Season model and climate models are different approaches. Who cares? They are VERY connected here! Anyhow *either* both models fail *or* one joint model fails. **They fail.**

Would you care to consider the following –

1. The Met Office statement on Newsnight that they 'verify' their climate forecasts against past date
2. That the said past data was fraudulently produced by, for example, the Climate Research Unit of the University of East Anglia and exposed in the CLIMATEGATE files.
3. It is therefore unsurprising that the Met Offices climate and season ahead forecasts fail, fail and fail again. They are rooted in failed science and falsified data.
  - The world has been cooling for at least 7 years while CO2 has been rising - contrary to their forecast.
  - The floody 'non barbecue' summers of 2007, 2008 and 2009 and the cold winter 08/09 and now 09/10 were ALL the opposite of the Met office forecast and ALL as predicted by WeatherAction months ahead. Met Office scored 0/5 and WeatherAction scored 5/5.
4. The failed Met Office forecast for this winter and the consequent unnecessary suffering and road deaths should be laid at the feet of the University of East Anglia, the Met Office and the BBC and charges of corporate manslaughter be issued.

## Is there a war on?

Radio 4 13.25 hrs 13<sup>th</sup> Jan 2010

*"No one predicted the cold weather would carry on so long"*

**FACT.** WeatherAction predicted it and that it would carry on & on - back in July and announced it on Oct 28<sup>th</sup> at Imperial College IN THE ACKNOWLEDGED PRESENCE OF THE **BBC** (see video: [www.kane-tv.com/wa/youtube](http://www.kane-tv.com/wa/youtube) and look at piers 3 - part3) - **who said they would carry it.**

WeatherAction repeated warnings in WA News Nos 1 (1 Jan), 2 (4Jan) and 3 (6 Jan) - all sent to many BBC reporters and available on [www.weatheraction.com](http://www.weatheraction.com) news section.

## Met Office – BBC – politicians – UN gravy train – all in denial of reality

What is the MO answer for failed Climate forecasts? The problem here is they are in denial of reality.

- **When its warm they say its Global Warming. When its cold they say ah that's just weather.**
- **However as with any science the test has to be reality; and here they FAIL**

ALL their forecasts for **ongoing warming since 2000**, more storms, MORE baking barbecue summers in UK & Europe, milder winters etc have **failed**. So THEIR MODEL HAS FAILED THEIR PREDICTIONS and so their theory must be scrapped. That should be the end of the matter. Ah but now their next tricks.....

- (i) **Change the facts.** The University (!?Yes funded by the taxpayer) of East Anglia has done that but got caught.
- (ii) **Change the rules** 'We have to wait longer for Climate to be measured', they now say and the trusty spin machine the BBC make a film entitled. *How the big freeze fits in with global warming* <http://news.bbc.co.uk/1/hi/uk/8447262.stm> (*gulp, read that again!!*). So how many more deep freeze winters do we need to be sure Global **Warming** is for real? The film is pseudo-scientific drivel which says this little bit of freeze-up doesn't matter and implies ongoing world warming when in fact all measurements show cooling since 2002 (including even the fraudulent data from the University of East Anglia which admits it too but has it half as fast as the satellite data which they have not been allowed to tamper with). As we at WeatherAction in October warned would happen, the Met Office have now increased the time-scale to measure climate (and still ignore the previous 6 million years of data which shows CO2 is generally driven BY temperature not their tail wagging dog theory). So whereas when it suits them a hot week or a single storm or 10 years of data was enough to say its global warming now its 30 years of data (which has been fiddled). And in ten years time what will they say? **But look at what this means! They are now saying these extreme cold winters and other such events are NOT evidence for or against Global Warming driven Climate Change** which they had warned us meant danger. So if their re-branded Climate Change is not important for these weather extremes then **what does it matter?**

In fact let's be clear, World average temperature changes of 0.5degC dont matter that much to anyone except weather freaks; what counts is extreme events and seasons and many of these are now predicted (with 85% success) by solar activity using the Solar Weather Technique months ahead while **the CO2 theory can predict nothing.**

**The Global Warmers had hoped their problems would go away but .....**

**The science deniers Empire is hitting the iceberg of truth – again!**

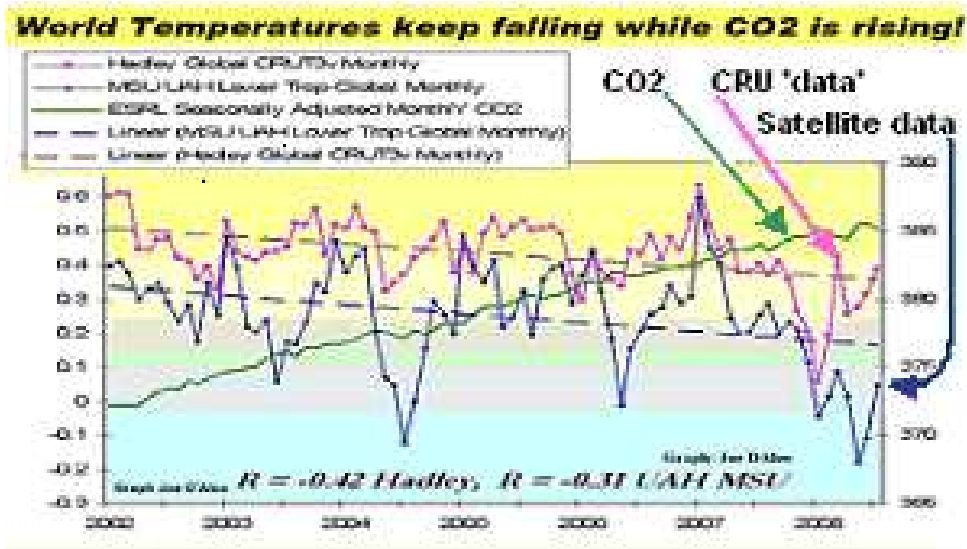
## NASA AND NOAA CAUGHT IN CLIMATE DATA MANIPULATION

**NEW REVELATIONS HEADLINED ON KUSI-TV CLIMATE SPECIAL** Climate researchers have discovered that NASA and NOAA scientists improperly manipulated data in order to claim 2005 as "THE WARMEST YEAR ON RECORD." KUSI-TV meteorologist, Weather Channel founder, and iconic weatherman John Coleman presents these findings in a one-hour special airing on KUSI-TV on Jan 14. Report [www.kusi.com](http://www.kusi.com). & <http://icecap.us/images/uploads/NOAARoleinclimategate.pdf>

# What is to be done?

2010 is an election year in UK. Three points for action in 2010 include:

1. **Campaign for accountable evidence-based science and policy** with public meetings & actions. As a first step we ask that Gordon Brown organise a public event to which scientific observational evidence for CO2 theory be presented, further to his assertion that such evidence exists [see video <http://www.youtube.com/watch?v=EAV7NHZcEcY> ]
2. **Consumer Action.** Refuse to buy goods which claim to be aimed at reducing CO2/Climate Change and ask that such dishonest claims end.
3. **Reach out to honest Greens and political activists** who are being brought down by the CO2 scam when all they want to do is defend bio-diversity, nature's richness & people's rights & living standards".



## Support evidence-based science!

WeatherAction gets no state funding & Copenhagen & all that takes a lot of effort, so

**BUY Forecasts** via <http://www.weatheraction.com/member.asp>

**Thank you!**

## STOP use of fraudulent data! - SIGN Downing St Petition! <http://petitions.number10.gov.uk/UEACRU/>

'We the undersigned petition the Prime Minister to suspend the Climate Research Unit at the University of East Anglia from preparation of any Government Climate Statistics until the various allegations have been fully investigated by an independent body.'

The link is easy to use It Emails you back for 'signature' confirmation.

Please sign & forward to someone else to sign.

**ASK ALL WOULD BE CANDIDATES IN THE ELECTION (they have been chosen already) to sign and make it clear you will not vote for anyone who doesn't sign this petition**

**FACTS! ClimateGate Revelation File** [http://www.youtube.com/watch?v=Cu\\_ok37HDuE&feature=player\\_embedded](http://www.youtube.com/watch?v=Cu_ok37HDuE&feature=player_embedded)

**WAno101 Copenhagen a frozen Flop – InfoWars & YouTube & World Forecasts links - <http://climaterrealists.com/?id=4720> <http://www.dailymail.co.uk/news/article-1237765/AA-blames-councils-failing-grit-roads-sooner-thousands-motorists-left-trapped-overnight.html>**

Info Links.....

### WA2010NewsNo 5 - 7th Jan 2010

**Letter to Minister Hilary Benn offering help to cope with ongoing big freeze (No reply yet)**

"....This very cold weather was predicted 6 months ago by WeatherAction long range forecasters and if the government were to use our forecasts there would be **no need for the UK to run out of road salt** - the consequences of which is suffering and death ..."

Benn letter pdf - <http://www.weatheraction.com/displayarticle.asp?a=131&c=1>

### WA2010NewsNo4 - 7 Jan 2010

**Letter to Gavin Esler BBC Presenter Newsnight 7th Jan 2010 (No reply yet)**

- Met Office & BBC accused of litany of lies on long range forecasting & climate change

- **Reason for Met Office failed forecasts rests on fraudulent (Climate Gate) data**

- Corporate manslaughter charges against University of East Anglia, Met Office and BBC called for.

Esler Letter pdf: <http://www.weatheraction.com/displayarticle.asp?a=130&c=1>

(i) Pdf full forecast for Jan 2010 as available via - <http://www.weatheraction.com/member.asp>

(ii) Pdf of WA2010NewsNo 3 including extracts from forecast 6 months ahead

= <http://www.weatheraction.com/displayarticle.asp?a=129&c=1>