



WANews10no22 June 23 Very Extreme Events Hits in June + July Prospects
PLEASE PASS ON – especially to politicians and media who really ought to know.

www.WeatherAction.com - long range weather & Climate forecasters

Delta House, 175-177 Borough High Street. London SE1 1HR Tel +44207939 9946

From Piers Corbyn+44(0)7958713320 http://twitter.com/Piers_Corbyn , piers@weatheraction.com

All the Very Extreme weather events of June (10-23) in Europe & USA confirm Long Range Solar driven predictions.

- Simultaneous extreme events around world verify predictable solar cause
- Major advance in forecast science
- More VERY EXTREME events coming in July - USA, Europe & world

What caused the super-extreme events in June?

What will happen July? - Extreme events - Gulf Tropical Storms + Climate Wars - What next?

News Event WeatherAction 12noon Frid 25 June

Delta house, 175 Borough High St, SE1

All the 5 spells of VERY EXTREME deadly weather events from June 10th to 23rd predicted in long range by Piers Corbyn of WeatherAction for specific catastrophes in USA & Europe & simultaneous other events around the world were confirmed to the day; and the driving events from the Sun were reported in Solar & magnetic records.

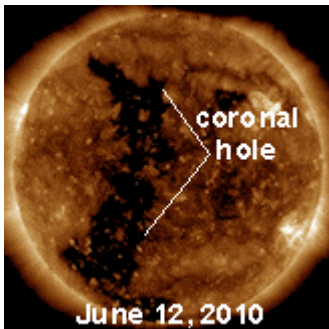
The 5 most extreme, deadly weather event-periods were:

Jun 9-10. Arkansas torrents – in time + general region predicted by WA. See links in <http://www.weatheraction.com/docs/WANews10No20.pdf>

Jun 12-14. Oklahoma inundated – confirms WA prediction; **SE France** devastated confirming WA prediction map (pto).

Jun 17-18. 90 died in **South China** due to devastating floods June 18th <http://bit.ly/cM7pf1>

Jun 21-23. Wisconsin + Montana storms + tornadoes confirm WA.



The deadly weather events around 14th June were driven by preceding huge sudden changes on the sun. Major magnetic unrest in Sunspot no 1078 and significant Coronal Holes June 11th were followed by a billion ton Coronal Mass Ejection producing a major radio burst June 12th. There was a dramatic increase in sunspot area Jun 9-13 and a sudden upsurge in Solar

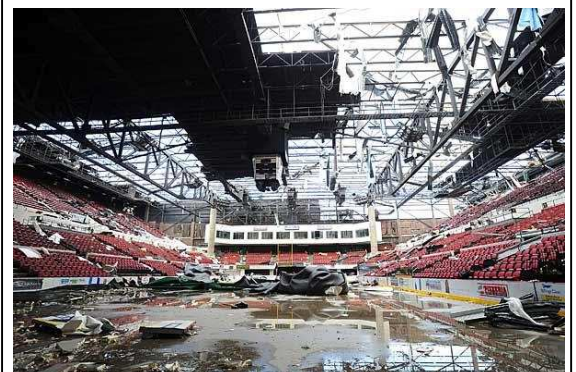
flares Jun 12 & 13. The major, sudden solar events which caused the weather extremes are on NOAA links: <http://bit.ly/9SAOFp> , <http://bit.ly/cm0ORK> including 'sounds' of radio storms!



Record Floods inundated Oklahoma City 14 June.
<http://bit.ly/aQfaBn> - just after Record floods drowned 20 in Arkansas 10 June <http://bit.ly/9BUndI>



The worst floods in France – Cote D'Azur - for centuries killed 25 when 14inches of rain fell in a few hours on 14 June <http://bit.ly/bj461J> <http://bit.ly/dmKLyj> , <http://bit.ly/abCxqv> , <http://bit.ly/a7zZ6G>



USA storms & tornadoes trash S Wisconsin <http://bit.ly/cvTJAp> & South Montana where record 130mph winds destroyed Billings stadium 21 June <http://bit.ly/b9PMtw> , <http://bit.ly/bkieif>

IT'S NOT CO2!

The early-mid June solar events impacted on the Earth a few days later through the solar wind and magnetic, ultra violet, X-ray and radio wave connections with devastating effect in USA & France. The solar origin of other very extreme weather spells in June are also apparent via the solar-magnetic sites.

The forecasts for USA (right) are available with Tropical storm and other forecasts via the '*Extreme Events - rest of world*' option on **WeatherAction.com** - <http://www.weatheraction.com/member.asp>

The Europe forecast map (right) for 14-17/18th June shows thundery deluges in France which gave floods. The (less severe) solar-lunar based forecasts for May were equally well confirmed; see [also USA WA fc map + more solar links]: <http://www.weatheraction.com/docs/WANews10No21.pdf>

SLAT replaces SWT!

"We have made new advances in understanding Solar-Magnetic Lunar effects on the Earth's weather which now enable us to predict very extreme events with astounding accuracy and distinguish these very important weather spells from other less extreme spells. We can also judge the relative impact of different sub-spells. For example the specified more extreme 21-23 June saw the Wisconsin & Montana thundestroms hail floods & tornadoes which were more extreme than events around sub-spell 17-18th. The new procedure is called **SLAT – Solar-Lunar-Action-Technique** and it has superseded my Solar Weather Technique. We are now in a special period of some months duration in which there will be more VERY extreme and dangerous weather events. We will predict when these spells are and give specific event forecasts for USA, Britain, Ireland, Europe and some other parts of the world", said Piers.

"Politicians and local Authorities would be foolish not to apply our forecasts in coming months. However so far they have generally shown themselves more ready to have people die from the effects of misleading global-warming inspired forecasts (such as for a mild winter which ensured they were unready for road salt to run out – despite the fact we warned it would) than apply scientific advances. I recommend members of the public show this news release to politicians and local Councils and call on them to apply our forecasts to do their duty to prepare for dangerous weather.

WeatherAction World long range Extremes selected Forecast Events

USA JUNE (9th-30th) 2010

SWT25DE public issued 6 June further to USA scenario maps created 16th May

General confidence 85% timing normally accurate to about 1 day

Solar Lunar Action Periods (SLAPs) as in Europe Forecast Map options chosen 29 March 2010 & used in B & Iw 45d & 90d forecasts 27 May. NB Britain & Ireland, Europe and various other parts of world are issued as separate forecasts.

This Forecast should be read in conjunction with the WeatherAction **JUNE Tropical Storms Formation Forecast** for Gulf/Caribbean & East Pacific – See <http://www.weatheraction.com/displayarticle.asp?x=200&c=5> for FREE summary

Note on 3-4th JUNE **a type SLAP** (BC 70% confidence)

As predicted in above link thundery developments did occur in Gulf of Mexico and coasts in period 3-4th June with 3 tornado reports & strong winds (trees blown down) on June 3rd in Louisiana. See http://www.spc.noaa.gov/climo/reports/100603_rpts.html - for USA Tornado, hail & strong wind reports

JUNE 9-10th (Extra Activity) and more importantly 12-14th - **a type EA SLAP** (AB = 80% confid)

• **MAJOR DELUGES & FLOODS; with thunder & tornado developments** espec later eg in:

- North Washington State / British Colombia;
- MidWest / South of great Lakes and NE USA eg Kansas, Nebraska, Iowa, Illinois, Michigan, New York State, Pennsylvania;
- Gulf States eg South Texas, Louisiana.
(see also Tropical Storm Forecast for likely TS formation in Caribbean / Gulf 12-14th.)

JUNE 17/18th **a SLAP** and 21-23rd **Major a SLAP** (AB=80% Confidence) (enhanced power since 16th May forecast issued)

- Active thundery Low pressure from SW USA to Great Lakes / NE USA – **Severe thunderstorms, tornadoes, deluges & local floods, especially later.**
- Gulf coast / Florida region **Thunderstorm deluges, tornadoes / waterspouts, floods espec later**
(see also Tropical Storm Forecast for likely TS formation in Caribbean / Gulf 21-23rd)

JUNE 26-28th (& poss July 1) **Major a & Δ SLAP** (AB=80% Confidence)

- Gulf coast / Florida region **Thunderstorm deluges, tornadoes / waterspouts, floods espec later**
(see also Tropical Storm Forecast for likely TS formation in Gulf 26-28th / poss July 1st)



FULL FORECAST DETAILS / Purchase Weather Action Extreme Events forecasts

(NB USA & all Tropical storms are part of *Rest Of World* option) <http://www.weatheraction.com/member.asp>

Pretty lousy summer for Brit & Ireland <http://www.dailyexpress.co.uk/posts/view/174037/Weather-Expert-predicts-wet-and-lousy-summer/>